

Vessel Specification and Information

船舶與作業相關資訊

1.0 作業範圍 SITE AREA

1.1 作業區域 Layout of Site

下圖1可見其風場範圍（紅色框線內），關於此區之座標請詳見表2。

Survey area as shown in below picture 1 (outlined with red).

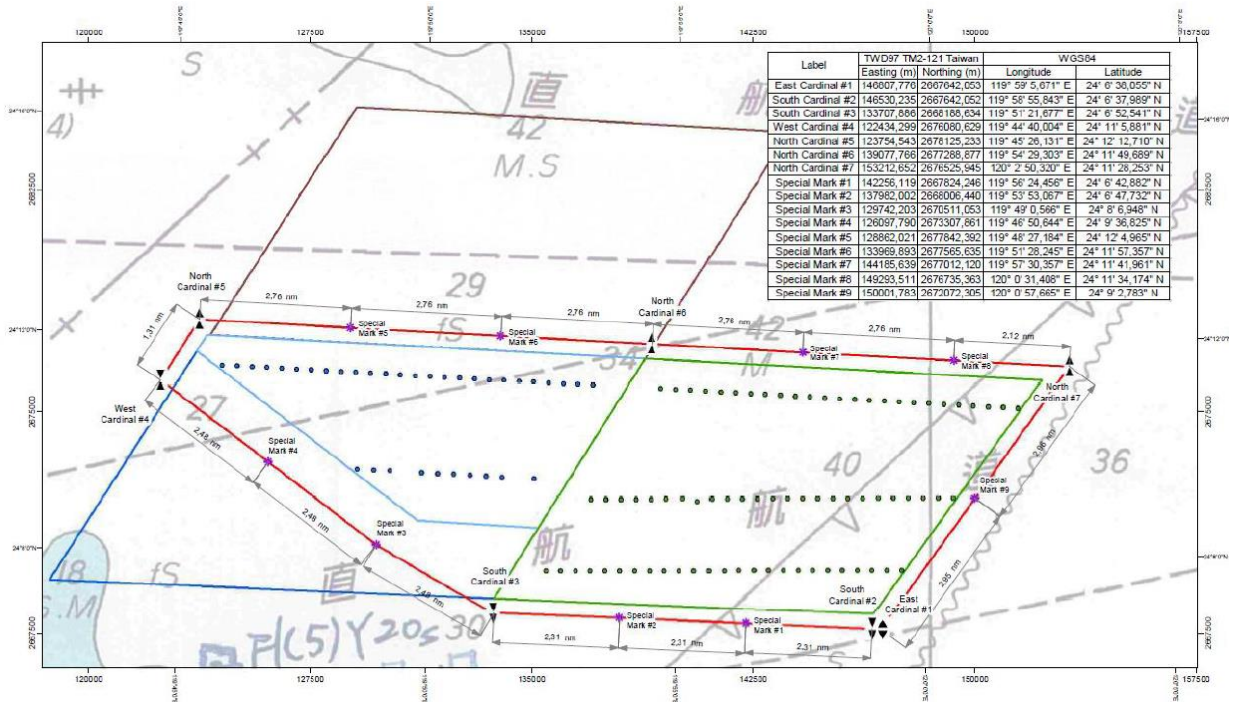


Figure 1-1 : Offshore Windfarm boundary and survey boundary

風場位置圖及調查範圍

1.2 風場邊界座標資訊 Coordinate of Site Boundary

詳細座標如下表所示。The coordinate information is as below.

Label	TWD97 TM2-121 Taiwan		WGS84	
	Easting (m)	Northing (m)	Longitude (DMS)	Latitude (DMS)
Special Mark #1	142256.119	2667824.246	119° 56' 24,456" E	24° 6' 42,882" N
Special Mark #2	137982.002	2668006.440	119° 53' 53,067" E	24° 6' 47,732" N
Special Mark #3	128948.886	2671119.863	119° 48' 32,289" E	24° 8' 26,515" N
Special Mark #4	125300.425	2673911.358	119° 46' 22,214" E	24° 9' 56,211" N
Special Mark #5	128862.021	2677842.392	119° 48' 27,184" E	24° 12' 4,965" N
Special Mark #6	133969.893	2677565.635	119° 51' 28,245" E	24° 11' 57,357" N
Special Mark #7	144185.639	2677012.120	119° 57' 30,357" E	24° 11' 41,961" N
Special Mark #8	149293.511	2676735.363	120° 0' 31,408" E	24° 11' 34,174" N
Special Mark #9	150001.783	2672072.305	120° 0' 57,665" E	24° 9' 2,783" N
East Cardinal #1	146807.776	2667642.053	119° 59' 5,671" E	24° 6' 38,055" N
South Cardinal #2	146530.235	2667642.052	119° 58' 55,843" E	24° 6' 37,989" N
South Cardinal #3	133707.886	2668188.634	119° 51' 21,677" E	24° 6' 52,541" N
West Cardinal #4	122434.299	2676080.629	119° 44' 40,004" E	24° 11' 5,881" N
North Cardinal #5	123754.543	2678125.233	119° 45' 26,131" E	24° 12' 12,710" N
North Cardinal #6	139077.766	2677288.877	119° 54' 29,303" E	24° 11' 49,689" N
North Cardinal #7	153212.652	2676525.945	120° 2' 50,320" E	24° 11' 28,253" N

Table 1-1 : Coordinate of Site Boundary

風場範圍座標

2.0 施工日期 Working Period

111年9月15日開始至111年12月31日，實際施工時程須視海氣象因素與工程狀況而定。

From 2022-09-15 to 2022-12-31，Exact period is depending on the weather.

3.0 船舶基本資料 VESSEL INFORMATION

3.1 船舶規格 VESSEL PARTICULAR

船名 Vessel Name	DA CHUAN CHI NO.12 大川吉12號
船籍港Home Port	Kaohsiung, Taiwan
總噸數 Gross Tonnage	49.72
船長 LOA	17.00 m
船寬 Width	5.00 m
呼號 Call sign	BP3233
水上行動業務識別碼 MMSI	533130592

3.2 工作用途 WORKING PURPOSE

作為Drix7的母船，護送Drix7 從布袋公主遊艇港到彰化離岸風場，並載送人員。

As a mothership for Drix7 (Survey equipment) acting as escort vessel from Budai princess port to Changhua offshore wind farm and to transport personnel.



Figure 3-1 : Photo of DA CHUAN CHI NO.12

大川吉12號船舶照片

4.0 調查儀器 SURVEY EQUIPMENT

#	設備 Equipment	型號 Specification	用途 Purpose
1.	調查儀器	Drix 7	風場現場調查

儀器名稱 Equipment	Drix 7
呼號 Call sign	FGE9266
製造商 Manufacturer	Designed and developed by French (法國)
船長 LOA	7.71 m
船寬 Width	0.824 m
吃水 Draft	1.95 m
航速 Speed	7 Kts



Figure 4-1 : Photo of Drix 7

Drix 7 調查儀器照片

5.0 預計航行路線 ROUTE PLANNING

從布袋公主遊艇港出港後，一路往北航行至作業區；依序完成作業後，延原路線返回布袋公主遊艇港。如下圖所示。

After departing from Budai Princess Harbor, sail north to the operation area; after completing the operation, return to Budai Princess Harbor on the same route.
As shown in the picture below.

轉向點 WAY POINT

WPT	POSITION	LEG	TOTAL DISTANCE	Turn Radius	WD(Low Tide)	UKC (Low Tide)
0	23° 23.165 N 120° 09.168 E	XXX	XXX NM	0.10 NM	4.2 M	2.2 M
1	23° 23.209 N 120° 09.120 E	321.0° 0.05 NM	0.05 NM	0.10 NM	4.0 M	2 M
2	23° 23.258 N 120° 09.148 E	003.0° 0.05 NM	0.10 NM	0.10 NM	3.8 M	1.8 M
3	23° 23.298 N 120° 09.120 E	307.0° 0.10 NM	0.20 NM	0.10 NM	5.4 M	3.4 M
4	23° 23.312 N 120° 09.027 E	270.0° 0.70 NM	0.90 NM	0.10 NM	4.2 M	2.2 M
5	23° 23.295 N 120° 08.268 E	266.0° 0.20 NM	1.10 NM	0.10 NM	3.3 M	1.3 M
6	23° 23.248 N 120° 08.071 E	259.0° 0.80 NM	1.90 NM	0.10 NM	4.2 M	2.2 M
7	23° 23.154 N 120° 07.677 E	250.0° 0.20 NM	2.10 NM	0.10 NM	5.9 M	3.9 M
8	23° 22.996 N 120° 07.441 E	223.0° 0.30 NM	2.40 NM	0.10 NM	6.6 M	4.6 M
9	23° 22.786 N 120° 06.554 E	259.0° 0.20 NM	2.60 NM	0.10 NM	7.3 M	5.3 M
10	23° 23.156 N 120° 00.502 E	274.0° 5.60 NM	8.20 NM	0.10 NM	20.0 M	18 M
11	23° 24.796 N 119° 54.907 E	288.0° 5.40 NM	13.60 NM	0.10 NM	110.0 M	108 M
12	23° 55.586 N 119° 45.900 E	345.0° 31.90 NM	45.50 NM	0.10 NM	60.0 M	58 M
13	24° 06.319 N 119° 50.801 E	023.0° 11.60 NM	57.10 NM	0.10 NM	33.0 M	31 M

Table 5-1 : Way point info

轉向點座標

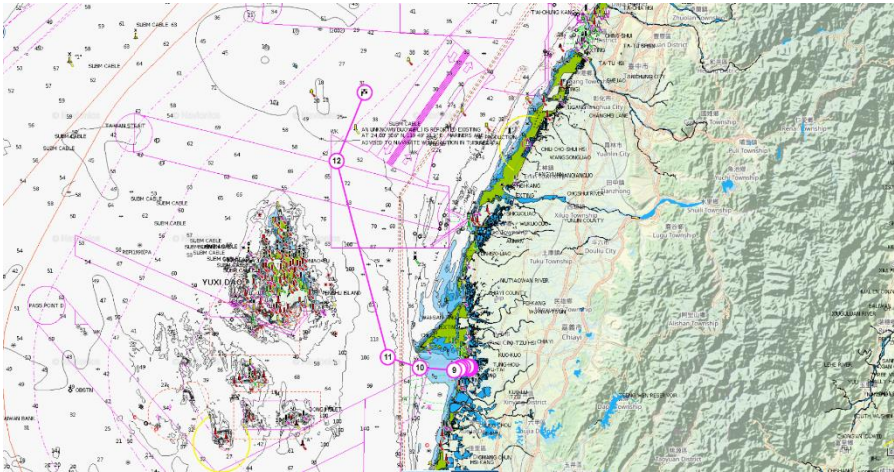


Figure 5-1 : General of Passage plan

航程路線

6.0 緊急聯絡人與專案負責人 CONTACT INFORMATION

專案公司 Project Company		樹木旺再生能源有限公司 Sulmara Renewables Ltd.	
職位 Position	公司 Company	姓名 Name	電話 Mobile Phone
專案經理	樹木旺再生能源有限公司	Carl Bailey	+64 273617130
運營經理	樹木旺再生能源有限公司	Cloe Lee	+65 96679563
海事經理 (台灣)	樹木旺再生能源有限公司	Eddie Wu 吳易軒	+886 921806477

Table 6-1 : Contact Information of Project Company

專案公司聯絡人資訊

DA CHUAN CHI NO.12 大川吉12號			
職位 Position	公司 Company	姓名 Name	電話 Mobile Phone
船長	大川吉海事工程有限公司	詹國進	+886 921010954
船隊經理	大川吉海事工程有限公司	許鴻茗	+886 919792790
船務經理	大川吉海事工程有限公司	謝瑩燕	+886 975093019

Table 6-2 : Contact Information of Contractor “DA CHUAN CHI NO.12”

DA CHUAN CHI NO.12 船舶聯絡人資訊